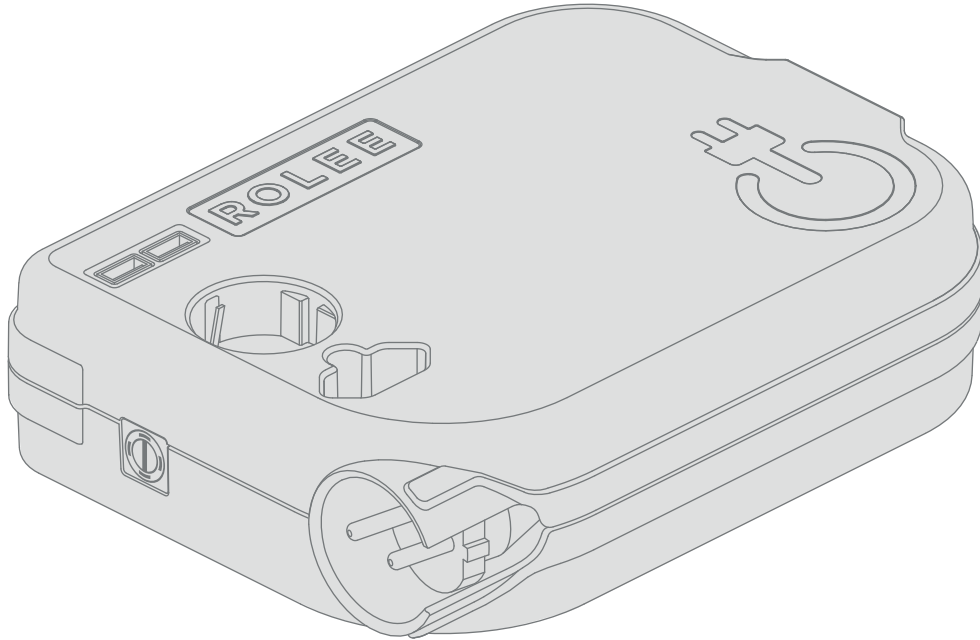
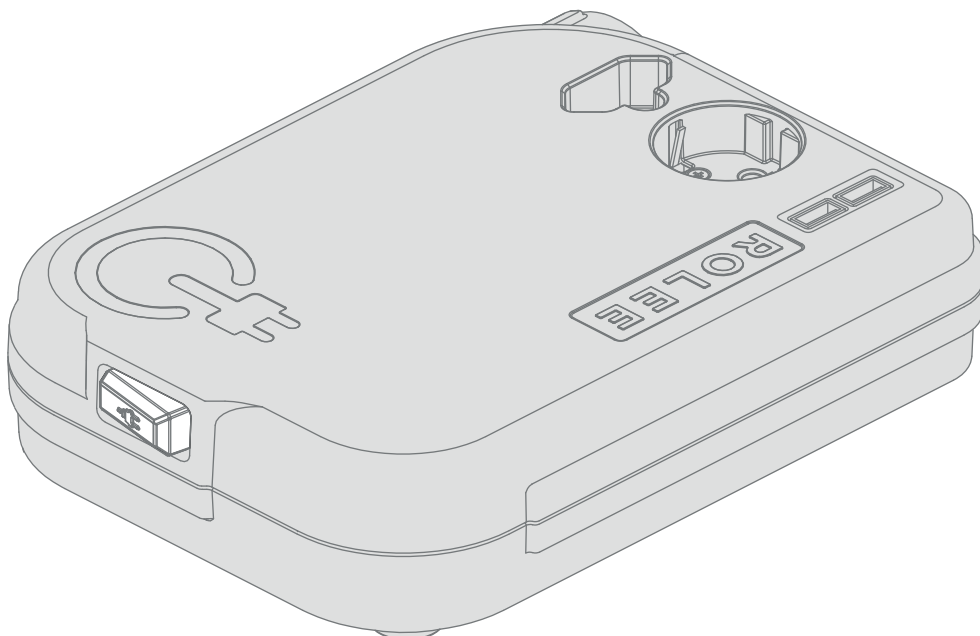




# INSTRUCTIONS FOR USE



THE IMAGES SHOW ILLUSTRATIONS OF A **ROLEE L** TYPE EXTENSION CORD



**Before first use of the product please read the Instructions for use, even if you are familiar with the usage of similar equipment. Only use the product according to the contents of this instructions for use. Keep the instructions for use for future reference.**

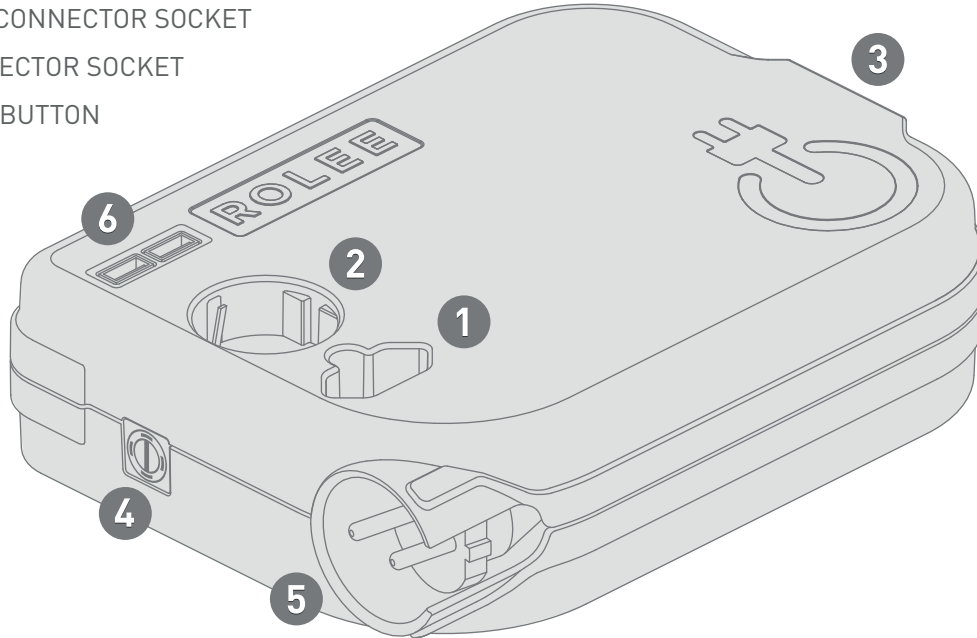
We recommend keeping the original box, packaging, receipt, and guarantee certificate of the product at least until the guarantee period expires. In case of shipment, place the product back into the original box of the manufacturer to ensure maximum protection of the product during shipment (e.g. in case of moving or sending it to the repair center).

# TABLE OF CONTENTS

<b>3</b>	OVERVIEW
<b>3</b>	CONTENTS OF THE PACKAGE
<b>4</b>	IMPORTANT SAFETY WARNINGS
<b>5</b>	FIRE HAZARD
<b>5</b>	RISK OF MALFUNCTION
<b>6</b>	STORAGE
<b>6</b>	CLEANING
<b>6</b>	TECHNICAL DATA
<b>7</b>	DECLARATION OF CONFORMITY
<b>8</b>	INSTRUCTIONS AND INFORMATION ABOUT THE PACKAGING MATERIAL USED
<b>8</b>	DISPOSAL OF PACKAGING
<b>8</b>	WASTE DISPOSAL OF USED ELECTRIC AND ELECTRONIC EQUIPMENT
<b>9</b>	CAUSES OF NON-OPERATION, TROUBLESHOOTING
<b>9</b>	WHEN AND HOW THE FUSES MUST BE REPLACED

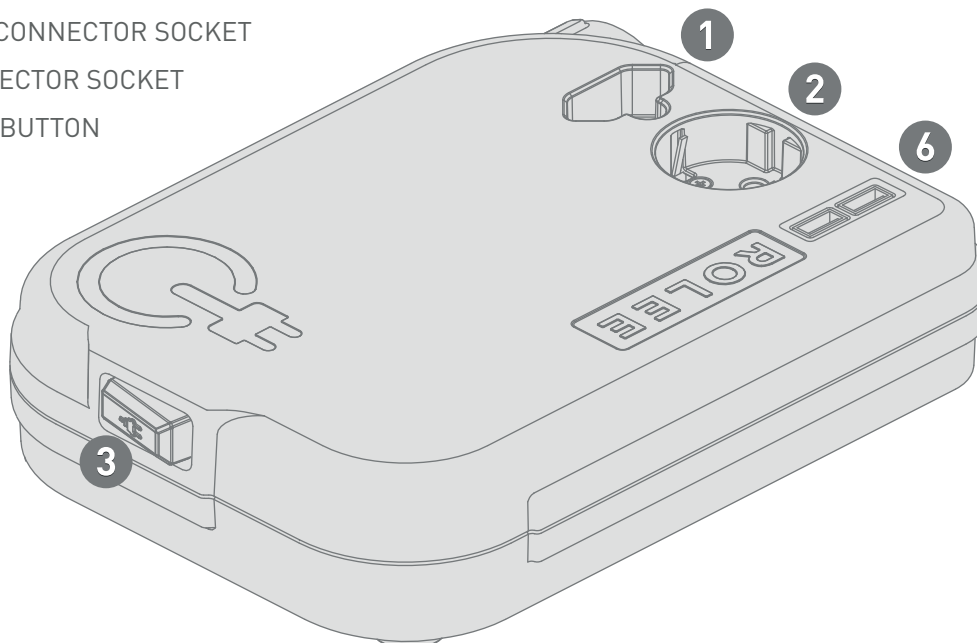
# OVERVIEW

1. NON-EARTHED CONNECTOR SOCKET
2. EARTHED CONNECTOR SOCKET
3. CABLE REWIND BUTTON
4. FUSE BOX
5. POWER CABLE
6. USB PORT



THE IMAGES SHOW ILLUSTRATIONS OF A **ROLEE L** TYPE EXTENSION CORD

1. NON-EARTHED CONNECTOR SOCKET
2. EARTHED CONNECTOR SOCKET
3. CABLE REWIND BUTTON
6. USB PORT



## CONTENTS OF THE PACKAGE

- 1X ROLEE REWINDING NETWORK HUB
- 3X EXTRA FUSES



# IMPORTANT SAFETY WARNINGS!

**i** READ IT CAREFULLY AND KEEP IT FOR FUTURE REFERENCE!

**Children younger than 8 years old, elderly people, people with physical or mental disabilities, and people who are not familiar with the use of the equipment and are not experienced in the operation of similar equipment can only use the equipment under the supervision of a person who is familiar with the instructions for use of the equipment and who takes responsibility for the safe use of the pull-out extension cord.** The extension cord is not a toy, therefore children must not play with it. Children can only use the equipment under adult supervision. Store the pull-out extension cord in a place where children younger than 8 years old can not reach it.

The pull-out extension cord can be used in households, offices and similar places. Do not use the extension cord in industrial areas!

**Do not place the extension cord on a hot area, near open flame or other heat source and where there is direct sunshine.**

The extension cord can only be connected to a power grid that has the same power supply voltage values as the ones printed on the product's type label.

Make sure that the power cable does not get into contact with hot surfaces or sharp objects.

**It is forbidden to immerse the pull-out extension cord into water or other liquids and to wash it under running water.**

If you no longer want to use the pull-out extension cord, or you leave it without supervision or would like to clean it, pull the connector out of the power socket.

Power cables must not be pulled out of the wall socket by holding the cable, you must hold the connector for this operation. Otherwise the cable or the socket can get damaged. Hold the connector while rewinding the cable.

**It is forbidden to use the pull-out extension cord with a damaged power cable!**

To prevent electric shock, the damaged cable of the equipment can only be replaced by the authorized repair center.

Do not use the pull-out extension cord if it does not work properly, fell off, got damaged in any other way or fell into water.

Do not try to fix the pull-out extension cord on your own or modify it in any other way. All repairs of the equipment must be made by the closest authorized repair center. Unauthorized opening of the equipment causes the liability for product defect or guarantee to be terminated.

Read all instructions carefully. Before using the product, make sure the power supply voltage is the same as the value provided on the type label on the bottom of the equipment.

**i** **WARNING!** DO NOT USE THE HUB IF THERE IS VISIBLE DAMAGE ON THE CABLE OR ON THE EQUIPMENT.

Only use the network hub in a dry, indoor place. Never touch the network hub with wet hands.

**Do not exceed the maximum allowed capacity of the network hub (max. 1,100 W).**

Do not use the network hub with an equipment where malfunctions can use emergencies (e.g. medical or safety devices).

**Only IT-equipment can be connected to the USB-port.**

Besides the dedicated equipment plugs, do not plug any other objects into the sockets of the network hub.

**Please note that the network hub is only voltage-free when the power cable is pulled out.**

Do not use the network hub with an external timer or a separate remote control system.

**Do not place the equipment near a stove or other type of heat sources. Heat can deform and decolor the plastic parts of the equipment.**

Before cleaning or performing maintenance on the equipment, it must be disconnected from power.

**We do not recommend using another extension cord.**

## FIRE HAZARD



FAULTY ELECTRIC CONNECTION OR TOO HIGH NETWORK VOLTAGE CAN CAUSE AN ELECTRIC SHOCK.

Never use the network hub when it is covered. Make sure that the network hub is not covered by a cloth or any other object.

**Position the network hub in such way, that the surrounding objects or furniture can not cause heat build-up.**

Keep the network hub away from flammable materials and objects.

**Do not use the network hub in locations where there is a hazard of explosion or fire.**

Please note that the maximum ambient temperature is 35 °C.

## RISK OF MALFUNCTION



MISUSE OF THE PULL-OUT EXTENSION CORD CAN DAMAGE THE NETWORK HUB.

The extension cord must be placed on an easy to access, horizontal, dry, and stable surface. Do not place the pull-out extension cord on the edge of the surface.

**Never place the pull-out extension cord on hot surfaces or near them (e.g. heating).**

Make sure that the power cable does not touch hot objects.

**Do not use the network hub if there are visible cracks, splits, or deformation on the plastic parts of the pull-out extension cord.**

# STORAGE

 STORE THE PULL-OUT EXTENSION CORD IN A DRY PLACE, PROTECTED FROM DIRECT SUNLIGHT, LOCKED AWAY FROM CHILDREN.

# CLEANING

 RISK OF SHORT CIRCUIT!

**Liquid pouring into the housing of the equipment can cause a short circuit.**

- Never immerse the network hub into liquid.
- Make sure that liquid can not get into the housing of the equipment.

**Misuse of the pull-out extension cord can damage the network hub.**

- Never use aggressive cleaning agents, brushes with metal- or plastic bristles, sharp and metal cleaning devices, for example knives, metal sponges, and other similar objects. These can damage the surfaces.

**Always unplug the pull-out extension cord from the socket before cleaning.**

**Only clean the pull-out extension cord with a dry, soft cloth.**

# TECHNICAL DATA

## MODEL: RF 350/400 (ROLEE S)

Network voltage	230 V~/50 Hz
Standby power level	-
Protection class (for electric shock)	Ip20
Length of power cable:	3.5 m
Cable type:	H05W-F 3 x 0.75
Weight:	0.9 kg
Load capacity (capacity of consumers)	max. 1,100 W
Overload protection	3.15 A, glass tube fuse
Overvoltage protection	none
Temperature:	max. 35 °C
<b>POWER SOCKETS:</b>	
– Protective contact:	3.15 A, 1 pc.
– Euro socket:	3.15 A, 1 pc.

## MODEL: REU 350/400 (ROLEE M)

Network voltage	230 V~/50 Hz
Standby power level	<1 W
Protection class (for electric shock)	Ip20
Length of power cable	4 m
Cable type:	H05WH2-F 2x0.75
Weight	0.9 kg
Load capacity (capacity of consumers)	max. 1,100 W

Overload protection	<b>3.15 A, glass tube fuse</b>
Overvoltage protection:	<b>none</b>
Temperature	<b>max. 35 °C</b>
<b>POWER SOCKETS:</b>	
– Euro socket	<b>3.15 A, 2 pcs</b>
– USB A port	<b>2 pcs with charging function; 5 V combined, max. 2 A</b>

## MODEL: RFU 350/400 (ROLEE L)

Network voltage	<b>230 V~/50 Hz;</b>
Standby power level	<b>&lt;1 W</b>
Protection class (for electric shock)	<b>IP20</b>
Length of power cable	<b>3.5 m</b>
Cable type	<b>H05W-F 3G0.75</b>
Weight	<b>1.1 kg</b>
Load capacity (capacity of consumers)	<b>max. 1,100 W</b>
Overload protection	<b>3.15 A, glass tube fuse</b>
Overvoltage protection	<b>none</b>
Temperature	<b>max. 35 °C</b>
<b>POWER SOCKETS:</b>	
– Protective contact	<b>3.15 A, 1 pc.</b>
– Euro socket	<b>3.15 A 1 pc.</b>
– USB A port, 2 pcs with charging function	<b>2 pcs with charging function; 5 V combined, max. 2 A</b>

## DECLARATION OF CONFORMITY

 THIS PRODUCT (ROLEE S-M-L) COMPLIES WITH THE ESSENTIAL REQUIREMENTS OF ALL THE APPLICABLE EU DIRECTIVES.

## DISPOSAL OF PACKAGING

 INSTRUCTIONS AND INFORMATION ABOUT THE PACKAGING MATERIAL USED

Separate the packaging materials and place them into containers for selective waste collection. Place the cardboard and the paper into the selective waste container of paper, foil into the selective waste container of plastic. Dispose of the used packaging materials at the waste disposal site designated by the municipality.

# WASTE DISPOSAL OF USED ELECTRIC AND ELECTRONIC EQUIPMENT

This marking on the products or in the attached documentations means that the electric or electronic product can not be disposed of as household waste. Leave these products at the designated waste collection site for proper waste disposal and recycling. In EU countries and other European countries, when buying an equivalent new product, these products can be left at the seller.

By correct waste disposal of the product, you are helping to prevent the development of potential hazards dangerous to the environment and human health, which could arise from improper waste disposal. For more information, ask the local authorities or the nearest collection place. Incorrect disposal of such waste may be punishable by a penalty according to the local regulations.

## FOR BUSINESSES IN THE EUROPEAN UNION

If you would like to destroy the electric or electronic equipment, ask your seller or supplier for the necessary information.

## WASTE DISPOSAL IN COUNTRIES OUTSIDE OF THE EUROPEAN UNION

This marking is valid in the European Union. If you would like to dispose of the product, ask the local authorities or your seller for information about the correct disposal.

A disposed equipment must not be mixed with household waste! If the network hub becomes unusable, the user is obliged to separate that from household waste according to the legal regulations and leave it at the nearest designated collection site. This way the professional recycling of disposed equipment can be ensured and damage to the environment can be prevented. This is reason electric devices are marked with this sign.

## CAUSES OF NON-OPERATION, TROUBLESHOOTING



### POTENTIAL CAUSES OF NON-OPERATION

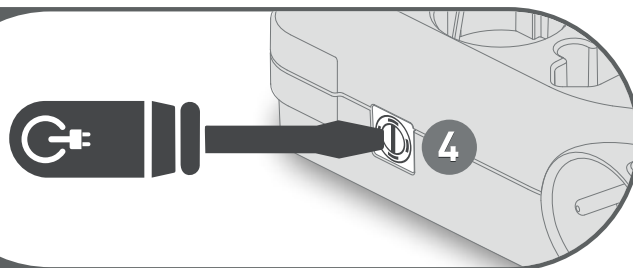
ERROR	POTENTIAL CAUSE	RECOMMENDED PROCEDURE
The cable does not rewind fully.	The cable could have gotten next to the rewinding wheel during rewinding.	Hold the cable a little tense while rewinding.
The cable does not rewind fully.	Rewinding could be difficult if the side walls are pressed together.	Pull out a 0.5–1 meter long cable and repeat rewinding by positioning the product on its 4 feet.
Cable can not be pulled out.	The equipment is damaged.	Have the equipment repaired (by a professional).
The cable unintentionally rewinds.	The rewind unit is damaged.	Have the equipment repaired (by a professional).



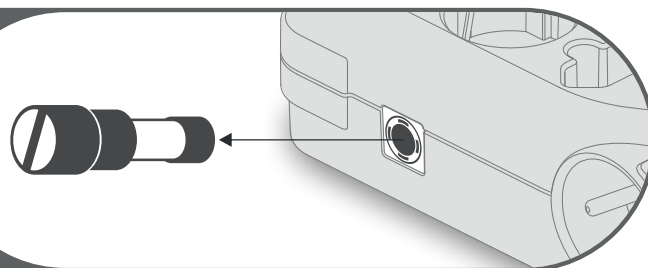
# WHEN AND HOW THE FUSES MUST BE REPLACED

**i** ALWAYS UNPLUG THE EQUIPMENT FROM THE POWER SOCKET!  
NOTHING SHOULD BE CONNECTED TO THE EQUIPMENT (ROLEE).

**A.** Remove the closure on the housing of the fuse (marked 4 on the figure) with a screwdriver.



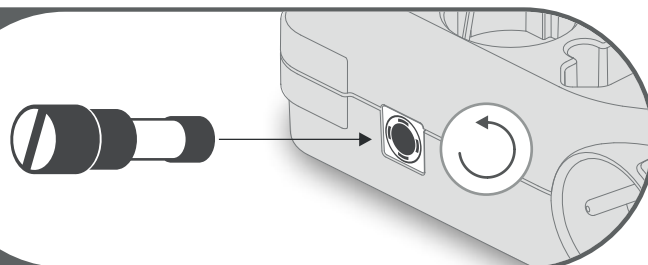
**B.** Remove the faulty, melted glass fuse from the product.



**D.** Place the glass fuse that was in the package into the product, then screw back the closure of the fuse housing.



**E.** Place the glass fuse that was in the package into the product, then screw back the closure of the fuse housing.



## THE PRODUCT IS MADE FOR HOUSEHOLD USE!

Warranty obligation ceases to exist when the equipment is used for not household, but industrial, catering industrial, commercial, etc. purposes! In case you have any comments or questions regarding the product, please contact customer service.

Phone **+36 20 852 1690**

Website **www.omnigoing.hu**

E-mail address **info@omnigoing.hu**

Place of origin **EU**

Manufacturer **Omnigoing Ltd.**

**i** CHANGES CAN BE MADE TO THE TEXT, DESIGN, AND TECHNICAL DATA WITHOUT PREVIOUS NOTICE AND ALL RIGHTS OF MODIFICATION ARE RESERVED.